



LOGIQ F6

Move forward, confidently



Move forward, confidently

You can count on LOGIQ™ F6 for the image quality, productivity, and affordability that shared services want in ultrasound.

Quality images for diagnostic confidence

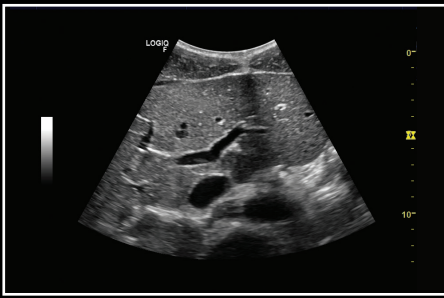
Built with many of the innovative imaging technologies found in high-end GE ultrasound systems, LOGIQ F6 provides:

- The ability to image both very superficial and deep anatomy, with excellent penetration
- Advanced features like Phase-Inversion Harmonics and Speckle-Reduction Imaging to help enhance spatial and contrast resolution for outstanding image clarity
- Innovative real-time spatial compounding acquisition and processing techniques that enhance tissue and border definition

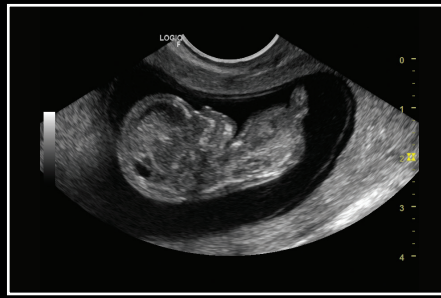
Versatility for a wide range of applications

LOGIQ F6 is a step forward in versatility for abdominal, vascular, cardiac, musculoskeletal, OB/GYN, pediatric, and small parts imaging.

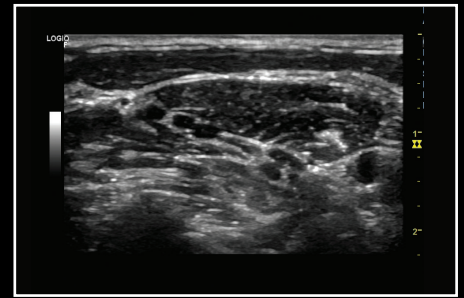




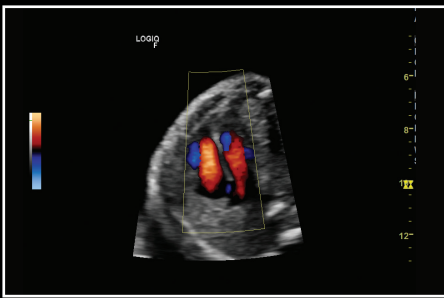
Liver



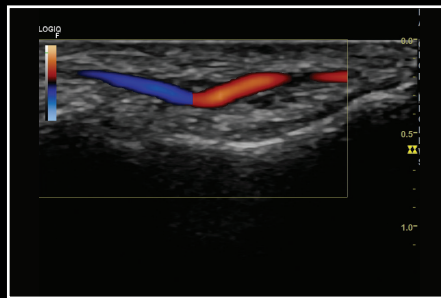
OB first trimester



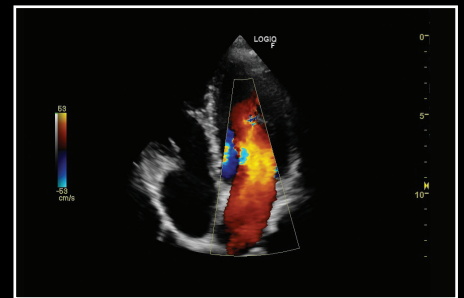
Brachial plexus nerve



Fetal heart



Finger with color Doppler



Cardiac

Automation for workflow efficiency

Flash forward to enhanced productivity that lets you focus on patients.

- Automation – Auto Optimization to quickly adjust image quality with the touch of a button and Auto-IMT for fast carotid exams
- Obstetrical imaging – SonoBiometry to perform key fetal biometry measurements automatically in seconds, and TUI to analyze fetal structure deformities
- Simplified peripheral connections – both wired and wireless – streamline archiving, and communication

Responsive service and support

With service coverage included, LOGIQ F6 systems give you value and peace of mind.

- My Trainer – on-board training modules help accelerate user operational confidence
- Scan Coach – Innovative scan plane reference tool for OB, vascular and cardiac exams available on demand during live scanning
- Fast repairs – Modular design helps make repairs easy and fast, so there is less disruption to your patient flow
- Remote diagnostics – Users can initiate diagnostics and auto-service requests right from the console to help maximize system performance.¹





About GE Healthcare

GE Healthcare provides transformational medical technologies and services to meet the demand for increased access, enhanced quality and more affordable healthcare around the world. GE (NYSE: GE) works on things that matter - great people and technologies taking on tough challenges. From medical imaging, software & IT, patient monitoring and diagnostics to drug discovery, biopharmaceutical manufacturing technologies and performance improvement solutions, GE Healthcare helps medical professionals deliver great healthcare to their patients.

Imagination at work

GE Healthcare GmbH
Beethovenstr. 239
42655 Solingen, Germany
T +49 212-28 02-0
F +49 212-28 02-28
www.gehealthcare.com

UNITED KINGDOM
GE Healthcare
Pollards Wood
Nightingale Lane
Chalfont St Giles
Buckinghamshire, HP8 4SP
T +44 1494 544000

AMERICAS
GE Healthcare
9900 West Innovation Drive
Wauwatosa, WI 53226
U.S.A.
T +1 888 202 5582

Data subject to change

© 2016 General Electric Company.

¹Not available in all regions. Check for availability in your area.

GE, the GE Monogram, imagination at work and LOGIQ are trademarks of General Electric Company.

Reproduction in any form is forbidden without prior written permission from GE. Nothing in this material should be used to diagnose or treat any disease or condition. Readers must consult a healthcare professional.

March 2016
JB39278Xa
300-16-U028E